

Development of a Rat Sandwich-Cultured Hepatocytes Model Expressing Functional Human Organic Anion Transporting Polypeptide (OATP) 1B3: A Potential Screening Tool for Liver-Targeting Compounds

Taleah Farasyn¹, Chao Xu², and Wei Yue¹

¹Department of Pharmaceutical Sciences, College of Pharmacy, University of Oklahoma Health Sciences Center, Oklahoma City, Oklahoma, USA; ²Department of Biostatistics and Epidemiology, College of Public Health, University of Oklahoma Health Sciences Center, Oklahoma City, Oklahoma, USA

SUPPLEMENTS

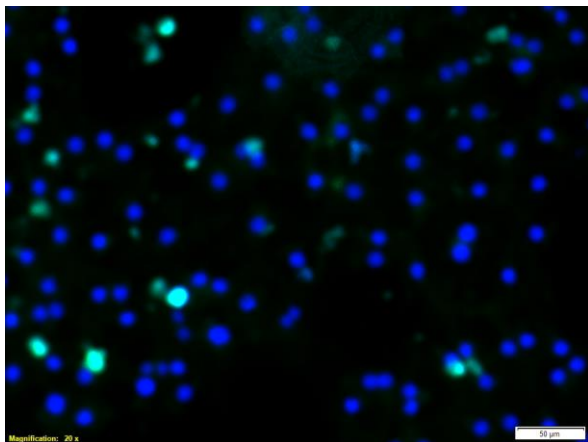


Figure S1. Immunofluorescence staining with FLAG antibody in non-transduced rat SCH at day 4 of culture. Nuclei were counter stained by DAPI. Bright green shows nonspecific staining of dead cells. Scale bar shows 50 μ m under magnification of 20X.

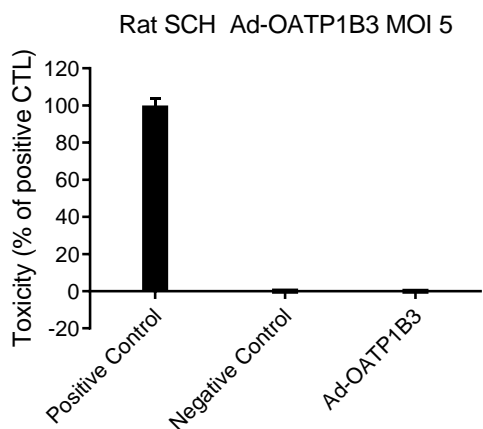


Figure S2. LDH cytotoxicity determination in Ad-OATP1B3-transduced rat SCH. LDH assay was performed to measure cytotoxicity in day 4 rat SCH transduced with Ad-OATP1B3-transduced at MOI of 5. Triton-X (2%)-treated cells and untreated cells served as the 100% cytotoxicity positive control and negative control, respectively. Data represent mean \pm SD ($N=1$ in triplicate).